

# NEWS from the PALETTE



Louisiana Art & Artists' Guild laagbr@laag-site.org  
www.laag-site.org www.facebook.com/LouisianaArtandArtistsGuild

February 2014

## Alan Flattmann - Interviewed by Caroline Derbes

Alan Flattmann has painted prolifically throughout his career. Although 60% of his works are pastels, he also paints oils and watercolors. Flattmann's art was encouraged by his mother and high school teachers. His works have been influenced by Rembrandt, De-gas, and Homer. He resisted the modernism of the 60s and chose the John McCrady School of Art where he could pursue realism while learning the importance of composition and design. An early goal was to become well-known and to make money at his art. (He advises: Persevere! Just do art! If one wants to be an artist, don't get used to making money another way.) The first book about his works, The Poetic Realism of Alan Flattmann, was published when he was just 34.



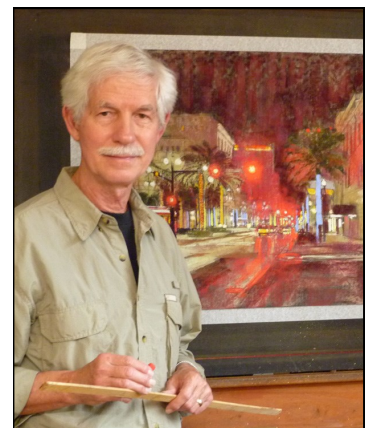
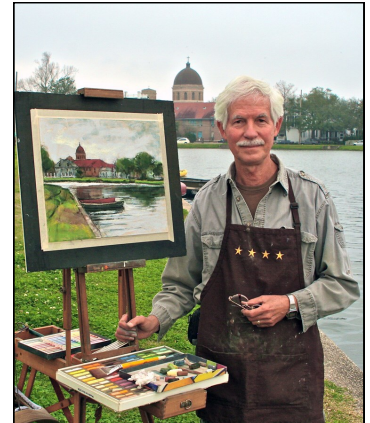
As a young graduate, Flattmann won a grant to paint in the West Indies where he enjoyed painting people working in their environments as he had done in his home of the French Quarter. After leaving the tranquil life of the islands, he and his wife decided to forego city life and moved to the peaceful country of Laurel, MS where he continued painting people as they pursued their livings or their passions. He still enjoys painting people, but when asked about his painting "nightmares", he declared that he no longer paints portraits on commission as they are problematic and not fun!



As a career artist, Alan is somewhat influenced by popular choices – one has to make a living. He hopes that viewers garner a sense of excitement from what he tries to project with a fresh view. The interviewer's thought upon first seeing his works online were how lyrical his paintings are. His cityscapes may be of familiar buildings, but his goal is to give a fresh insight through his style.

Flattmann has written several books, Art of Pastel Painting, French Quarter Impressions, and available in March will be his newest, An Artist's Vision of New Orleans: The Paintings of Alan Flattmann. Alan is represented by Windsor Fine Art Gallery and Garden District Gallery, New Orleans; Three Rivers Gallery, Covington. When asked about other honors, Alan excitedly told the interviewer that he had been elected to the Pastel Society of America Hall of Fame in 2006. Each year, one artist is awarded this honor, and it was a big, grand event.

Alan usually paints five days a week; however, every day is devoted to his career in a number of ways: planning, framing, communicating with galleries, traveling, photography, and leading workshops. When traveling, he draws and paints watercolor sketches of scenes and uses those along with photos to complete studio paintings. His present commission is a panoramic oil painting of New Orleans which is designed from a composite of photos. He explained that oil painting is more practical for large works as it is hard to frame large pastels.





## Message from the President

Dear all y'all,

The NEW YEAR is NOW! All those resolutions are made! We had a new member walk into the Studio in the Park with his application and announce that he had procrastinated enough! He was taking action. I loved his commitment.

The Art Guild Board is a bit different. Beverly Heil is leaving her position as Member-At-Large. Thank you, Beverly, for serving on the Board for 2013. She will now be handling the exhibit at Salon Fashion starting in January. Beth McLain will serve as a Member-At-Large through 2015. Claudia LeJeune is shifting positions on the Board, moving from Treasurer to become a Member-At-Large through 2015. The Board appointed Cathy Sarrazin as the Interim Treasurer. We'll hold an election to fill this job at the next Members' Forum on March 23. And, Leah Schwartzman will continue serving as a Member-At-Large through 2015.

The River Road Show was a huge success, and the reception on December 13 was exquisite. I saw many of you there, so I know that YOU know! The volunteers on River Road Show really attended to all details, and they worked so well together. I add my special thanks to Claudia and the whole team for lots of hard work!

By the time you get to read this message, we will have finished the January Board Retreat. Please email or call me or any of the Board members to share your ideas about YOUR Art Guild! Tell us how we can improve, and what we are doing well. We need to hear from YOU, again!

BREC renovations at Cedarcrest Park now feature a concrete parking area for the handicapped spaces. Please join us at the Studio and enjoy these new features while you paint or visit.

Paint or draw daily. Be part of a team that inspires you. And, care!

Sincerely, **Barbara Andrepont** [bandrepont@bellsouth.net](mailto:bandrepont@bellsouth.net) cell: 225-773-8020

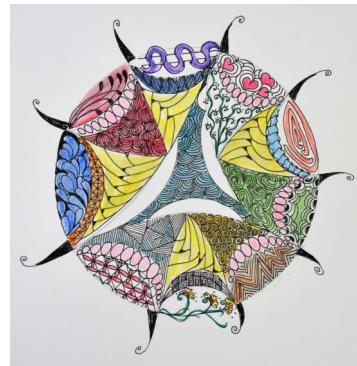
## From the Library

**The Beauty of Zentangle** by Sandra McNeill and Cindy Shepard

Reviewed by Kay Bailey

LAAG has acquired a new book for its library collection. Zentangle is a fun and exciting way to create beautiful art. It is not doodling. Zentangle is a growing new art form that combines meditation, creativity, and fun. Almost anyone can enjoy drawing intricate tangles with the easy-to-learn method. You don't need to be an artist or purchase expensive equipment – all you need is paper and pencil to get started. With Zentangle, you can relax and reduce the stress in your life while creating something beautiful.

On the third Tuesday of every month, Zentanglers get together to practice their art at the Studio in the Park. The next Zentangle studio is scheduled for February 18 at 9:30 am. If you would like to try this art form or just learn more about it, join us for some Zentangle fun. Below are some examples.



## Overdue Library Books

Volunteers have been going through the LAAG reference library check-out card file. Many of the cards indicate some books have been checked out for an extended period of time, some date back as far back as 2007. If you have had a library book more than 60 days please return it to the library. Most of these books have been donated to LAAG for the benefit of ALL members. Please be considerate of others who may be interested in, or waiting to check out the book YOU have ... !!!



## 44<sup>th</sup> Annual River Road Show

The reception for the 44<sup>th</sup> River Road Show was held on Friday, December 13<sup>th</sup>, and it was a huge success. Attendance was even greater than last year, with many participants traveling from out of state. Judi Betts presented the awards and shared her thoughts on those chosen for awards.

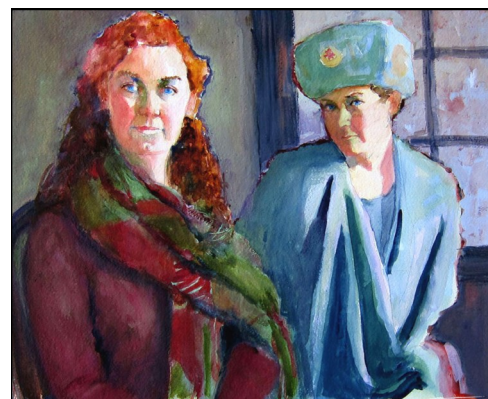
Congratulations to Victoria Castillo of College Station, TX who won First Place with her oil portrait entitled *Against the Light*. Miguel Malagon of Chicago, IL won Second Place with *Just Kool*, and Suzanne Wolfe of Tuscaloosa, AL won Third Place with *The Winter Guest*.



**First Place**  
*Against the Light*  
Victoria Castillo



**Second Place**  
*Just Kool*  
Miguel Malagon



**Third Place**  
*The Winter Guest*  
Suzanne Wolfe

Congratulations go to the three Guild members who received awards for their paintings: Cheri Fry received a Merit Award; Laura Mitchell and Byron Levy each received an Honorable Mention.

Congratulations also go to all the Guild members who were juried into the River Road Show: Suzanne Antoon, Kay Bailey, Calvin Balencie, Nanci Charpentier, Terri Dakmak, Marylyn Daniel, Denice Cyrex Ducote, Betty Efferson, Emily Efferson, Jane Flowers, Cheri Fry, Mary Heckman, Torie Holeman, Ellen Jenkins, Claudia LeJeune, Byron Levy, Pat Macaluso, Ralph Marino, Carol Ordogne, Lisa Pope, Marilyn Price, Wilma Roy, Patricia Ryan, Kathy Miller Stone, NWS, June Tuma, Sue Wang and Pat Wattam. Kudos to you all!!

### Spotlight on Volunteers

I would like to extend a special thanks to all of the River Road Show volunteers that helped to make it such a huge success. These are the people who pitch in wherever needed behind-the-scenes in addition to committee work, and these are the tasks they performed;

- Labeling, sorting and mailing of prospectus, invitations, and catalogs.
- Distribution of prospectus and invitations at area businesses
- Solicitation of area Sponsors
- Receiving local paintings and opening paintings shipped
- Hanging and display of paintings
- Bringing food and serving for the reception, table set-up and display
- Greeting and signing in guests. Cleaning up after the reception
- Taking down paintings and repacking for shipment



Judi Betts, Claudia LeJeune,  
Victoria Castillo

A Huge Thank You to everyone who volunteered their time!  
Claudia LeJeune, River Road Chairperson

### Winter Judged Show

Monica Bishara, LWS, a local artist, judged this exhibit and her selections were presented at the Reception and Awards Presentation on August 11. Monica attended the Reception and spoke briefly about the winning paintings. Congratulations to the winners of the Winter Judged Show!

First Place: Cheri Fry, *Daniel*

Second Place: Arlene Earhart,  
*Pretty Baby*

Third Place: Louise Hansen,  
*Old Church Courtyard Doors*

Honorable Mention

Claudia LeJeune, *Super Chiller*

Joyce Hensley, *Destin's Landmark*



### Reflections for the New Year

This members exhibit was hung at the Theatre on January 9 and will be on display for public viewing until March 6. Please be sure to stop by during normal business hours to view the 22 wonderful works of art. An artist's reception for this exhibit will be held on February 2 from 2:00 p.m. to 4:00 p.m. at the Independence Park Theatre. We invite you to join us for snacks and refreshments and to view some wonderful art exhibited by your fellow members.

All members who have artwork in this exhibit must pick up their paintings on March 6, between 10:30 am and 2:00 pm.

### Spring Judged Show

Artists who want to enter artwork in the **Spring Judged Show** should bring their paintings to the Independence Park Theatre on March 6 between the 10:30 am and 2:00 pm. Please review the hanging requirements; available in the member handbook or on the LAAG website at [laag-site.org/exhibits](http://laag-site.org/exhibits).

### Salon Fashion

Current exhibit hangs until March 19.

### Mayor's Office

Take-in is now until February 5.

Exhibit dates are February 7 - June 6.

Paintings must be a minimum of 22" x 28".

### Serop's Restaurants

Highland Road location - Roberta Loflin

Jefferson Hwy location - Mary Sparkman

Both exhibits are available for viewing during regular business hours until the end of March.

Members interested in exhibiting their artwork at one of the Serops locations should contact Roberta Loflin at [rloflin@gmail.com](mailto:rloflin@gmail.com). The exhibit space at each location can accommodate approximately 6-8 paintings depending on the size of the paintings--usually from 5x7 to 16x20. These local businesses are great opportunities to show your paintings, and exhibits there have resulted in several sales.



## Upcoming Workshops

Visit the LAAG website at [laag-site.org/workshops/](http://laag-site.org/workshops/) for details, descriptions, supply lists and changes to workshop schedules. When available, you will also find a link to the instructor's website so you can view examples of their artwork. Be sure to check the schedule often because it is continually being updated as workshops are scheduled/confirmed throughout the year.

NOTE: Workshops may be cancelled due to lack of participation/registration. Register early to help ensure the workshop you are interested in remains available. Early registration is particularly important for workshops with instructors who must make travel arrangements.

### **Caroline Derbes - Right Brain Drawing**

February 10-13, Monday - Thursday from 9:00 am to 12:00 pm

Registration Fee: \$150 LAAG members / \$175 nonmembers

To register contact Charleen Kling at [brcrawfishtails@aol.com](mailto:brcrawfishtails@aol.com) or 225-927-0933.

More information on the LAAG website at [laag-site.org/workshops/Derbes/](http://laag-site.org/workshops/Derbes/)

Many people insist, "I can't draw!" The left hemisphere of the brain can't. It likes to talk, so, yes, it can't draw. The exercises in this class are specifically designed for the right hemisphere which LOVES to draw. It's like magic!

### **Roberta Loflin - Everything Coming Up Roses - Watercolor**

Saturdays, March 1-April 5 from 9:30 am to 12:00 pm

Registration Fee: \$100 LAAG members / \$125 nonmembers

Ages 14 and older

To register contact Roberta Loflin at [rlloflin@gmail.com](mailto:rlloflin@gmail.com) or 225-803-6785.

More information on the LAAG website at [laag-site.org/workshops/Loflin/roses](http://laag-site.org/workshops/Loflin/roses)

Students will focus on the technique of painting this beautiful flower, expanding the color values on red roses to create a sense of depth and roundness, painting raindrops/dew drops on petals, leaves, etc. We will paint from photos and live "models".



### **Paul Jackson - Painting Patterns and Textures in Nature**

March 12-14, Wednesday - Friday from 9:00 am to 4:00 pm

Registration Fee: \$375 LAAG members / \$425 nonmembers

To register contact Betty Gravois at [elizabethgravois@gmail.com](mailto:elizabethgravois@gmail.com) or 225-257-4958.

More information on the LAAG website at [laag-site.org/workshops/Jackson/](http://laag-site.org/workshops/Jackson/)

If watermedia is your passion, then this highly energized painting workshop is for you! Paul's stress-free, positive approach toward the act of painting will inspire you to loosen up and have fun again. Expect an intense, concentrated and lively workshop where you will elevate your understanding of how watercolor can be controlled.



### **Ann Marie Davis - Breaking Into Mosaics**

Tuesdays, March 18-April 22 from 6:00 pm to 8:30 pm

Early Bird Fee (until February 14) - \$100 LAAG members / \$125 nonmembers

Regular Fee: \$125 LAAG members / \$150 nonmembers

All materials are included in the workshop fee.

To register contact Trish Poynot at [grannytrish@yahoo.com](mailto:grannytrish@yahoo.com) or 225-756-6635.

## Alan Flattmann - Landscapes, Cityscapes and Portraits in Pastels

April 29-May 2, Tuesday - Friday from 9:00 am to 4:00 pm

Early Bird Fee (until March 7) - \$300 LAAG members / \$350 nonmembers

Regular Fee: \$350 LAAG members / \$400 nonmembers

To register contact Betty Efferson at [bettyeffersonartist@me.com](mailto:bettyeffersonartist@me.com) or 225-266-7064.



## Carrie Waller - The Art of Painting Glass in Watercolor

May 15-17, Thursday - Saturday from 9:00 am to 4:00 pm

Early Bird Fee (until April 8) - \$150 LAAG members / \$200 nonmembers

Regular Fee: \$200 LAAG members / \$250 nonmembers

To register contact Brenda Legendre at [plegend@cox.net](mailto:plegend@cox.net) or 225-769-2991.

More information on the LAAG website at [laag-site.org/workshops/Waller/](http://laag-site.org/workshops/Waller/)

## Member News

**Pat Wattam** had a painting, *Summer Heat*, juried into the 2013 Fall National Oil & Acrylic Painters' Society (NOAPS) International ON-LINE Exhibition. According to NOAPS, "... the participation and quality of work submitted was outstanding. The jurors had a very difficult job of selecting 150 paintings from the almost 500 paintings entered." View the show at [http://noaps.org/html/t\\_oli\\_2013\\_fall.html](http://noaps.org/html/t_oli_2013_fall.html) Pat was notified just before Christmas! Congratulations, Pat!



**Mary Heckman** won the First Place Award in the Adult Professional Division in the "Art Gone Wild" show at the Baton Rouge Zoo. Her painting is *Bozie Sitting at Baton Rouge Zoo*.



**Joann Smith** sold a painting from her exhibit at the Serop's, Jefferson Highway location. It was on exhibit over the Christmas holidays until January. The painting, *Springtime* is a colorful watercolor.



**Joann Smith** and **Mary Sparkman**, had an exhibit at their local library, the Watson Branch of the Livingston Parish Library, during the months of November and December.

## Membership News

- ♦ The Guild would like to extend a warm welcome to the following new members: Betty Cannella, Nan Landry, Sheri McNeely, Pamela Miller, Judy Rushlon, Rosemary Ydarrage and Pat Zeller.
- ♦ Our thanks to everyone who has renewed their membership for 2014.
- ♦ Membership Handbooks, including a member directory, will be mailed around the end of February.
- ♦ The next Members' Forum will be on March 23 at the Studio in the Park from 2:00-4:00pm.

## Iberville Chapter News

At the end of December 2013, we welcomed our 25th member to our Chapter! We are so proud of this accomplishment, and are hoping everyone renews to celebrate with us and plan for a bigger and better year in 2014!

Thanks to the Baton Rouge Chapter for all the help and encouragement you have given us and your participation in our activities ... especially our 2013 art show which was so successful! We heart you guys, and Chapter Liaison Lane Downs has promised us a big party with dancing bears when we reached that magical number!!

We are starting up again at the farmers market at Tractor Supply in Plaquemine on the 3rd Saturday of each month. If you are looking for something to do, please make plans to make a trek out here. They have wonderful farm fresh honey, eggs, fruit, and veggies, to name a few, not to mention some of our art, at country prices, 10am -2pm!! And for your shopping pleasure, there is a Stage store in the same lot, and of course, Tractor Supply, my newest favorite shopping adventure!

Hope to see you there!

**Laurie Broussard**

LAAG Iberville Chapter President

## Felician Chapter News

We are very excited about the opportunities for the FLAAG Chapter this year. If you have any suggestions or would like an item placed on the agenda for the February meeting, please let me know.

At the December meeting, Alice Kent was elected President, and Connie McMillin is serving the second year of her term as Secretary. Connie and Alice will be sending out Membership Forms for 2014. Since the forms were revised prior to our meeting, you will still mail the new form with your dues to: Donna Kilbourne, Post Office Box 51, Clinton LA 70722.

I also want to mention that the East Felician Parish Clerk of Court's office is still trying to fill their exhibit months. If you would like to exhibit your paintings individually or along with another member, please contact Amanda at the Clerk's Office. Her number is 683-5145. Several of our members have sold paintings from these exhibits.

Happy New Year to everyone!

**Alice Kent**

LAAG Felician Chapter President

## Baton Rouge Art Show Receptions

### Animals in Art

For 27 years, the LSU School of Veterinary Medicine has been proud to showcase the International Exhibition on Animals in Art. This annual art show features 75 pieces in a variety of media celebrating animals and what they bring to our lives. The Opening Reception is on March 29 from 6-8pm in the SVM Library. The show then runs through April 27 during library hours.

### Brush with Burden

The reception for the Brush with Burden show will be on March 22 from 1-4 pm at the Steele Burden Memorial Orangerie. The public is invited to view works in all media, inspired by Burden. This year's theme is Louisiana's Culture and Nature.



Louisiana Art and Artists' Guild  
PO Box 41115  
Baton Rouge, LA 70835

# NEWS from the PALETTE



**Louisiana Art & Artists' Guild**

[www.laag-site.org](http://www.laag-site.org)

[laagbr@laag-site.org](mailto:laagbr@laag-site.org)

[www.facebook.com/LouisianaArtandArtistsGuild](https://www.facebook.com/LouisianaArtandArtistsGuild)

**February 2014**

This newsletter is produced by a committee consisting of Lane Downs, Trish Poynot and Leah Schwartzman.

If you would like to help with any aspect of producing the newsletter please contact Lane Downs at [newsletter@laag-site.org](mailto:newsletter@laag-site.org).

Please send member information for the newsletter to Trish Poynot at [newsletter@laag-site.org](mailto:newsletter@laag-site.org) by the 10th of every other month.